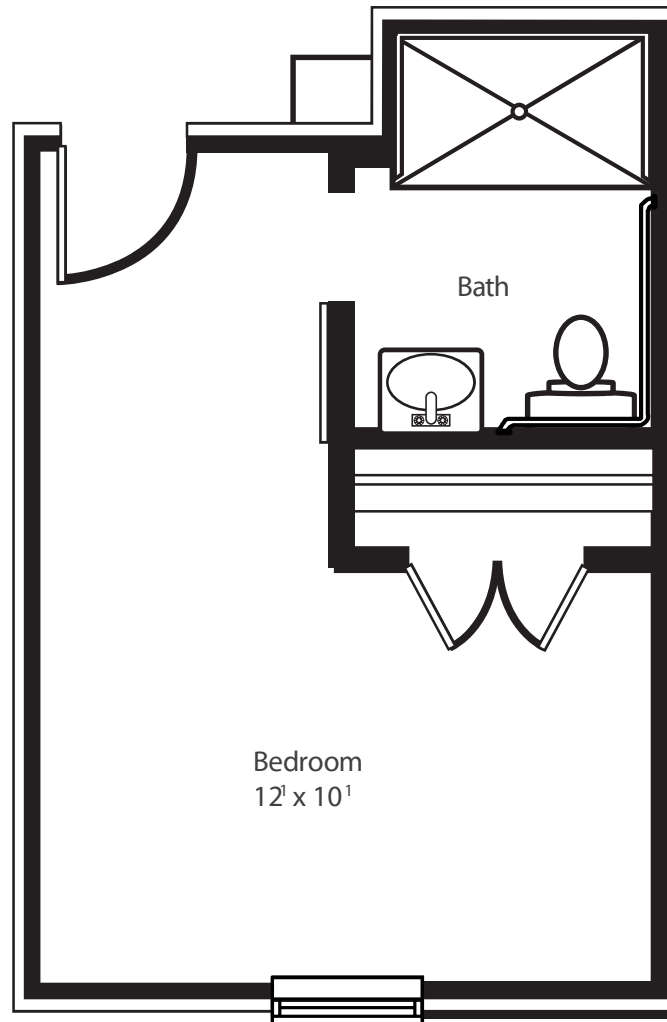


**Suite 6 | Skilled Nursing**  
275 S/F | One Bedroom | One Bath



- All-Inclusive Pricing
- 24/7 on-site registered nurse
- Pet friendly community
- Daily social calendar to stimulate the brain and body
- Anytime snacks
- Evening campus security
- Concierge Service
- Weekly laundry & housekeeping
- Maintenance-free living
- All utilities including cable and Wi-Fi
- Salon & Spa
- Full Service Bar
- 24-hour emergency response system

  
**MARSH'S EDGE**  
ON ST. SIMONS ISLAND

**6 of 7**  
Care Services Floorplans

136 Marsh's Edge Lane  
St. Simons Island, GA 31522  
Phone: 912-291-2000  
[www.Marshs-Edge.com](http://www.Marshs-Edge.com)