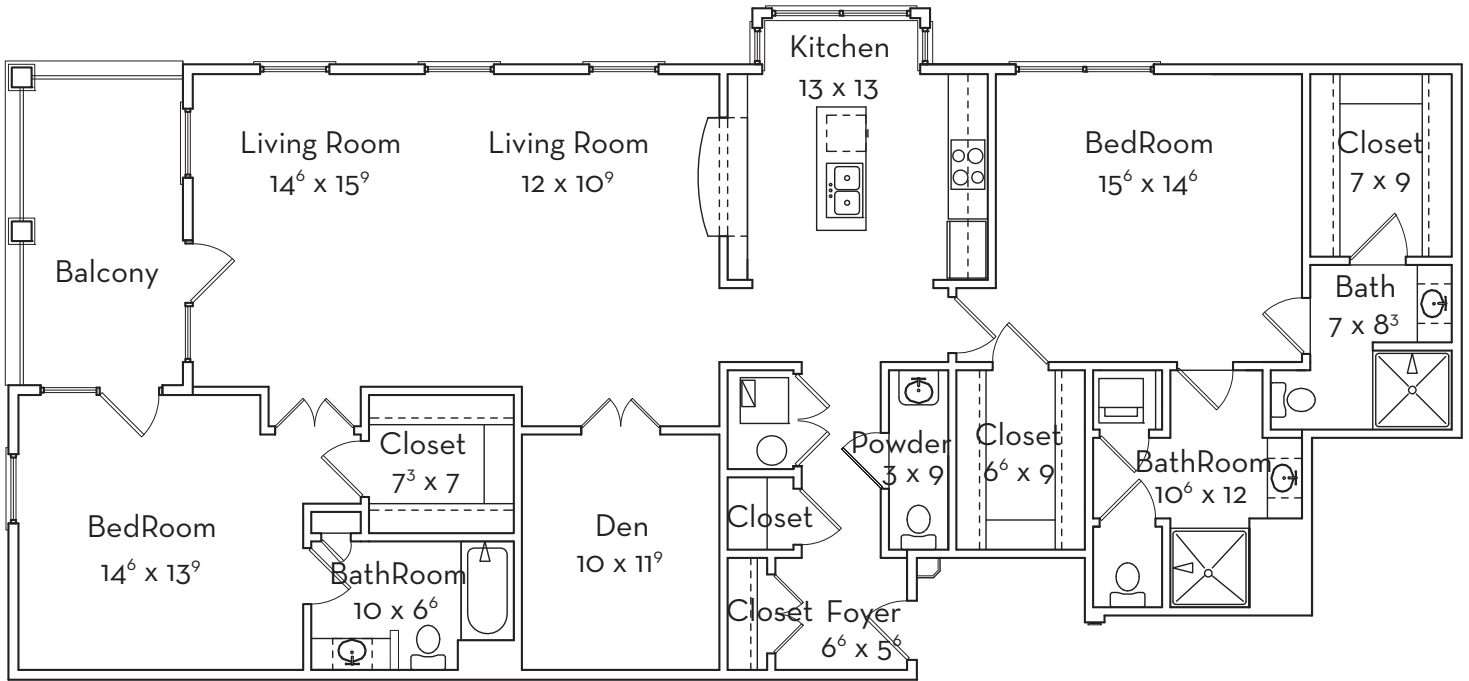


# The St. Claire | Villa Apartment

1,886 S/F | Two Bedroom  
Three & Half Bath



- Maintenance-Free Living
- Weekly Housekeeping
- Daily Dining
- Bill Payment
- Transportation
- Safety
- Pets Welcome
- 24-hour emergency call system
- Bring Your Own Furniture
- Transition Services
- Award-Winning Wellness Center
- Access to Health Care
- Heated Indoor Pool
- Signature Events & Social Gatherings



1 of 7  
Villa Apartment Floorplans

136 Marsh's Edge Lane  
St. Simons Island, GA 31522  
Phone: 912-291-2000  
[www.Marshs-Edge.com](http://www.Marshs-Edge.com)