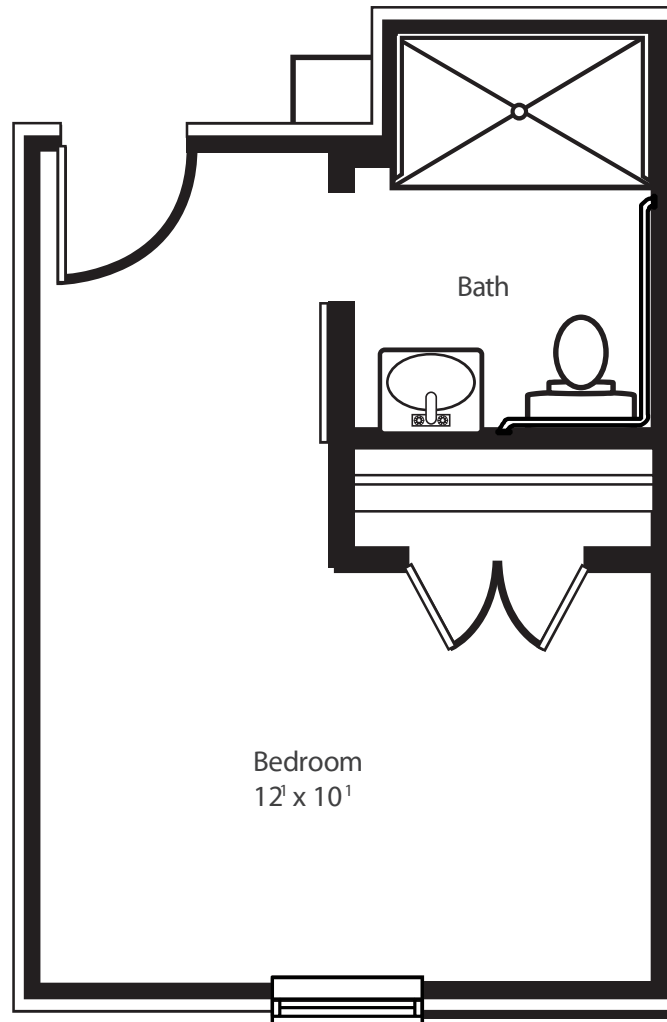


Suite 6 | Skilled Nursing
275 S/F | One Bedroom | One Bath



- All-Inclusive Pricing
- 24/7 on-site registered nurse
- Pet friendly community
- Daily social calendar to stimulate the brain and body
- Anytime snacks
- Evening campus security
- Concierge Service
- Weekly laundry & housekeeping
- Maintenance-free living
- All utilities including cable and Wi-Fi
- Salon & Spa
- Full Service Bar
- 24-hour emergency response system


MARSH'S EDGE
ON ST. SIMONS ISLAND

6 of 7
Care Services Floorplans

136 Marsh's Edge Lane
St. Simons Island, GA 31522
Phone: 912-291-2000
www.Marshs-Edge.com